

**Adelaide Art Society**, 112 Margaret Street, NORTH ADELAIDE 5006

## **Earleen Eastwood is the *Featured Artist* at the *Spring Exhibition* which starts on **Saturday 7<sup>th</sup> October 2017****

Earleen Eastwood has been chosen as the Featured Member for the Adelaide Art Society Spring Exhibition for the considerable skills she demonstrates in a variety of media.



Earleen exhibits widely in South Australia. Earleen has studied at the Adelaide Central School of Art, BAPea Art School with Peter Bok, and with teacher and mentor Trevor Newman. She is a regular exhibitor and has paintings in private collections.

“I work mainly in mixed media and acrylic, but also like to paint in oils and other media.”



Figure 1 *The Glance*

### **Solo Exhibitions**

**2009** SALA, Theology Bookshop, Adelaide, handmade original jewellery

**2012** *Late Blooming*, SALA, Carpe Diem, Port Adelaide. Exhibition of paintings and original designed handmade jewellery.

### **Prizes**

#### **2015**

Invited artist, RSASA exhibition, Rising Sun Hotel.

Special Mention in Category, Solar Art Prize, 'Torn Asunder'

Nocturne' Selected for RSASA catalogue, 'Fringe Benefits'

Finalist, two paintings, Solar Art Prize, Caring for our Planet

#### **2014**

Peoples' Choice Award, Winter Exhibition, Adelaide Arts Society

Merit Award, Campbelltown Rotary Art Show, Adelaide

Finalist, Solar Art Prize, *Caring for our Planet*, Adelaide

#### **2013**

First Prize, Class 3, Royal Adelaide Show

Commended, Class 6, Royal Adelaide Show

'*Summer Daze*' Award of Merit, RSASA '*Tassels and Tales*', Award of Merit, RSASA

Earleen paints with friends at Friday's Sketch Group at the **Adelaide Art Society**.

Along with many examples of Earleen's work, there will be paintings & sculptures from members of the society. A selection committee ensures the works are of a high standard.

**Spring Exhibition Opening Ceremony**  
**October 7<sup>th</sup> at 11:30 am.**

**Genevieve Theseira-Haese, Lady Mayoress, Adelaide City Council** will open the **Exhibition**.

The Exhibition is "Cash & Carry" – purchases can be immediately taken home.

The **AAS Spring Exhibition** will be open 11:00pm to 3:00pm

Saturday 7 October	Sunday 8 October
Saturday 14 October	Sunday 21 October
Saturday 21 October	Sunday 28 October



Figure 2 | Stand Alone

## **AAS Sketch Groups**

**Adelaide Art Society** makes the following weekly **Sketch Groups** available to its members and to the wider artist community for a small attendance fee:

- Monday am **Portrait**
- Tuesday am **Still Life**
- Wednesday am **Life Drawing, Sculpture & Painting**
- Wednesday evening **Life Drawing & Painting**
- Thursday am **Portrait**
- Friday am **Use the Facilities Group**

## **AAS Social Nights**

These events provide an opportunity for members and their partners to meet their fellows and enjoy a demonstration, video or a guest speaker. 7:00 pm for 7.30pm Start. The evening ends with a "bring a plate supper".

- **Friday September 29<sup>th</sup>**. Some DVDs from the Society's Library will be played. **Non-members are also welcome** to this Social Night for a **gold coin donation**.
- **Thursday October 27<sup>th</sup>**. Paul Jackson the well-known water-colourist, from the USA will give a demonstration. **Non-members are also welcome** to this Social Night for a **\$5 entry fee**.



Figure 4 Geisha #1



Figure 3 Geisha #2



Figure 5 Big Blue Mountain

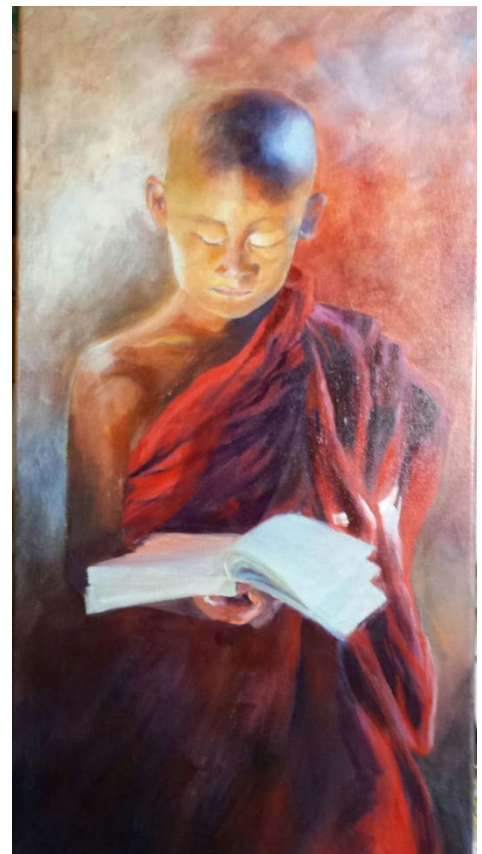


Figure 6 Buddhist Novice